



Video Entry System

Introduction



T-VIEWS



Touch

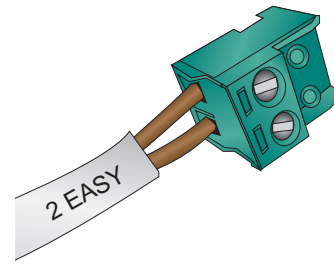


Memo

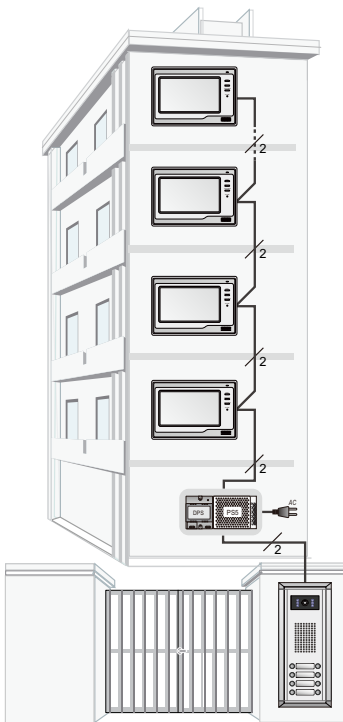
T-Views Series Monitors

System Introduction

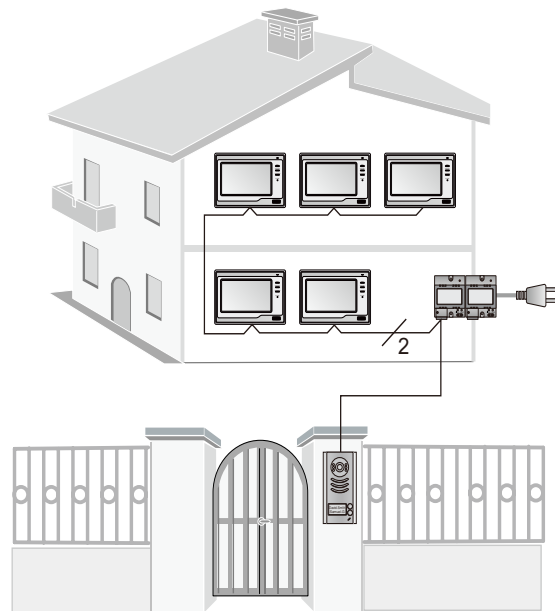
With only 2 wires (no polarity) throughout the whole installation, the 2-wire system is a simplified installation system with minimum wiring and powerful features. The minimum wiring drastically saves time and reduces errors. By means of FM video modulation technology, system provides better protection against interference, which guarantees best performance at all points of the installation.



- Max. 32 Monitors in a system
- Max. 4 Door Stations
- Max. 6 CCTV cameras.
- Connect Door Strike and Exit Button directly.
- Connect door bell and extra ringer directly.
- Control staircase light or relay executors.



Apartment Application



Villa Application

T-VIEWS

2 wire system Color Monitor

DT692/SD/TD7



7 inch Digital TFT



Picture Memo



SD card supported

T-VIEWS

2 wire system Color Monitor

DT14/SD/TD7



7 inch Digital TFT



Picture Memo



SD card supported

T-VIEWS

2 wire system Color Monitor

DT693/SD/TD5



5 inch Digital TFT



Picture Memo



Micro SD card supported

T-VIEWS

2 wire system Color Monitor

DT25/SD/TD5



5 inch Digital TFT



Picture Memo



Micro SD card supported

Digital TFT panel

The most important feature of Monitor is the display screen. In T-views series, the old analog panel were replaced by digital panel with four times pixel density, graphics looks smooth and continuous then ever.



Analog LCD



Digital LCD

Resistive touch screen

Row and line trail is visible on old touch screen, icons and buttons were located at defined position. Now, it is replaced by resistive Touch Panel, icons and buttons can be anywhere.



Old touch screen



Resistive touch screen

Chord Ring tones

Now, 8 polyphonic ring tones were introduced into T-Views series Monitor. 12 pieces of tones can be selected, and different calls can be assigned with different tones.



Night intelligent ring tone

Day and Night ring volume can be setup separately. When a call is made at night, softer ring will be more friendly.

By default, 18:00~5:59 is night time.



Mute function

Ring volume can be set to 0, that is Mute function. When a call is received, Monitor will turn on, but no ring sound will be heard, you can find Mute icons on screen. It is useful if you don't want to be disturbed some time, or multi Monitors were installed in one room.



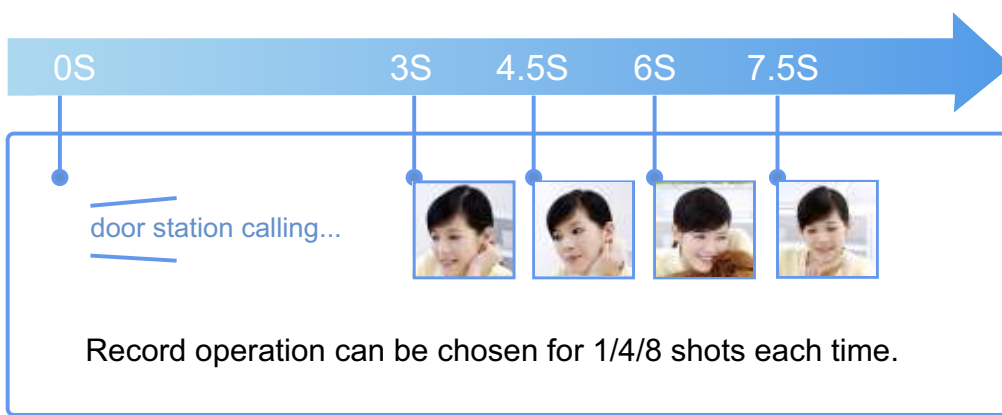
Picture Memory

Both Auto and manual recording

Auto-Recording is enabled by default. If a Call is received, 3s later, Monitor will record automatically. If the call was not answered, LED will slowly flash until you have browsed the picture memo. Manual recording is always available when video is present.

1/4/8 pictures recording

You can setup memo Options to choose 1/4/8 pictures memo. If 4/8 was chosen, you will have 4/8 shots for each recording operation, with 1.5 seconds intervals.



Copy to SD card and browse in PC

T-Views Monitor features built-in flash memory (about 120 MB) and external SD card. You won't lost pictures without SD card, you can copy memory if SD card was inserted later. By means of T-Views Photo software, you can browse and manage the pictures memo.

Browse Memo

The memo is displayed in 4 picture each page. You can zoom to full size by touch the picture, and then touch the screen to return.



Photo Frame

Automatic presentation

IF Album is run, files in SD -> ALBUM will be displayed. Each photo will last for 5 seconds, and then next photo will be shown.



Slide to show next/last photo

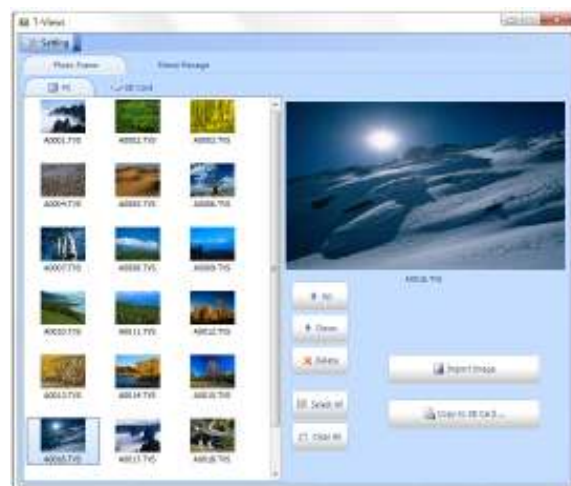
ON Monitor, use your finger to slide Right/Left on screen To see next/last photo, just like an iPhone. To exit, just slide Upper/Bottom on screen, or touch the screen and last 2s.

T-Views Photo software

Use this tool to manage the photos on SD card, and browse picture memo, and transfer to JPG file that can be viewed on PC.

Drag photo you wanted

It is easy to operate, just drag the file(s) and put on T-Views, the photos will be added.



Point to Point Intercom Function

Inner call

If multi Monitors were installed in one apartment, use Inner Call to call others.



Intercom call

The Selective Intercom allows you to choose from up to 32 names.

In some situation, you can simplify the interface, by just touch the defined icons.

It is useful in apartment or office application.

Intercom by select form Address book and from Code are both supported.

Intercom by namelist

A complete name list of all users in the system can be Edit and download by DT-CONFIG software.

Max 32 Names are supported, also, you can reduce the list to available names only.



Intercom by code

Frequently used Call numbers can be added in this menu, in an intuitive and attractive interface.

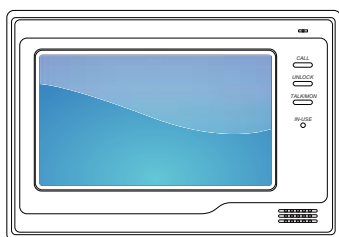
Up to 32 Icons can be added to support full range.

By default, Monitors of 01~04 address were defined.



Technical Specification

7-inch Monitor



Display and Touch Screen

7-inch digital TFT, widescreen (16:9)

800*3(RGB)*480 pixels resolution

Resistive touch screen (1.4mm optical glass)

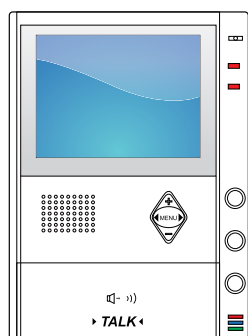
Power Supply

Power: By DT-DPS (DC 24V)

Standby: < 15mA (1 minutes after power down)

Working: < 400mA

5-inch Monitor



Display and Touch Screen

5-inch digital TFT, 4:3

640*3(RGB)*480 pixels resolution

Resistive touch screen (1.4mm optical glass)

Power Supply

Power: By DT-DPS (DC 24V)

Standby: < 15mA (1 minutes after power down)

Working: < 320mA

Multi Media capacity

Memo: 800 pictures (Inner Memory)
>30,000 pictures (2G SD card)

Resolution: 720*576 (PAL/CCIR)
720*480 (EIA/NTSC)

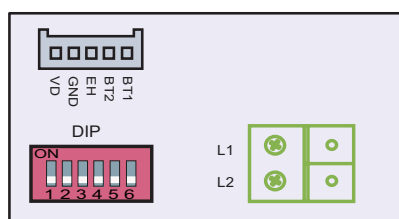
Photo: 800 pcs (SD card)

SD card: 2GB / 4GB / 8GB /16GB

Note 1: SD Card is not included

Note 2: Use Micro SD for DT693, DT25

Wiring Terminal



BUS: Non-polarity bus connection

S1: Setup DIP switches

SW+/-: Door bell call button

EXT-RING: External ringer (12Vdc 100mA)

VIDEO: Video signal output

T-Views Simulator tools

T-Views Simulator is a toolset software for T-Views engine.

Use Simulaotr to design menus, manage icons, and create configuration files.

To show/hide icon groups

To modify attributes

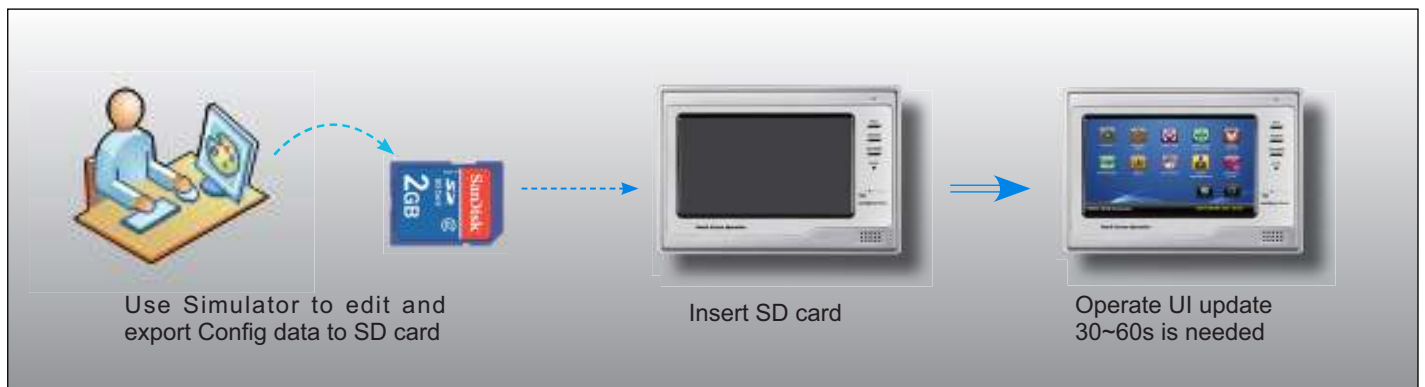
Code	Description	Left	Top	Tab
99	About Button	125	99	0
8	Status Bar	55	125	15
7	Logo Bar	0	125	15
11	Camera-1	9	11	15
16	Auto-Switch	44	11	1
25	Direct Call Guard Unit	113	11	3
40	Alarm Security Menu	148	11	4
70	Multi Media Menu	9	57	5
75	Album	44	57	6
80	User Setup	79	57	7
180	Estate Management	113	57	8
190	Intelligent Home	148	57	9
99	About Button	79	30	15

Drug to add to work area
Right click to replace the icon

Design area, drug and place the icons

Real preview window
Each menu design pages

Steps to update User Interface



T-Views Menu description

Home Screen

Home screen is the menu you start, and return.

Touch Home icon to go home screen, if you want to exit from other menus.



Call answer screen

Call answer screen looks like an operation platform,when receive a call from door station,the visitor will be seen,and you can operate all on the console desk.

