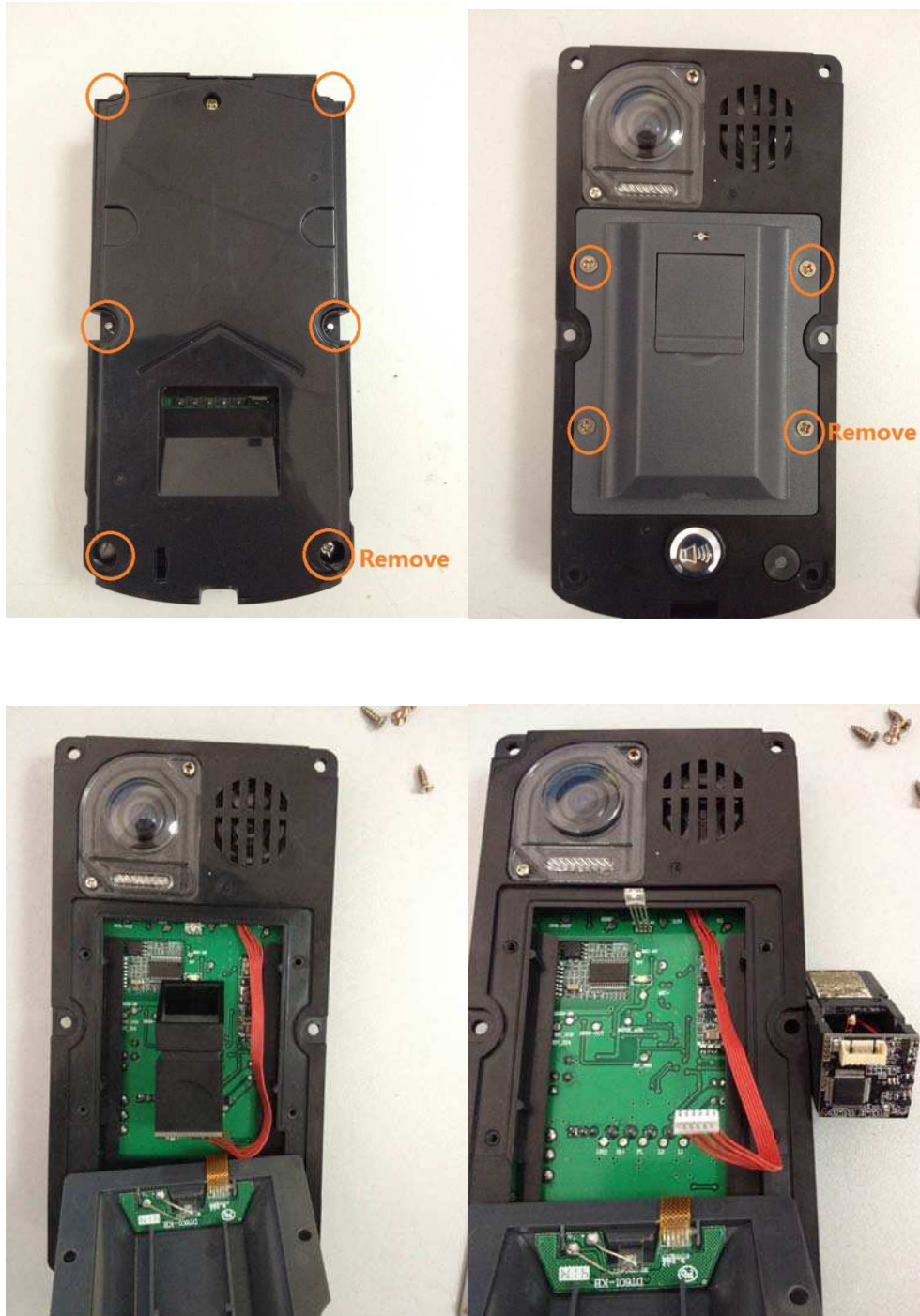
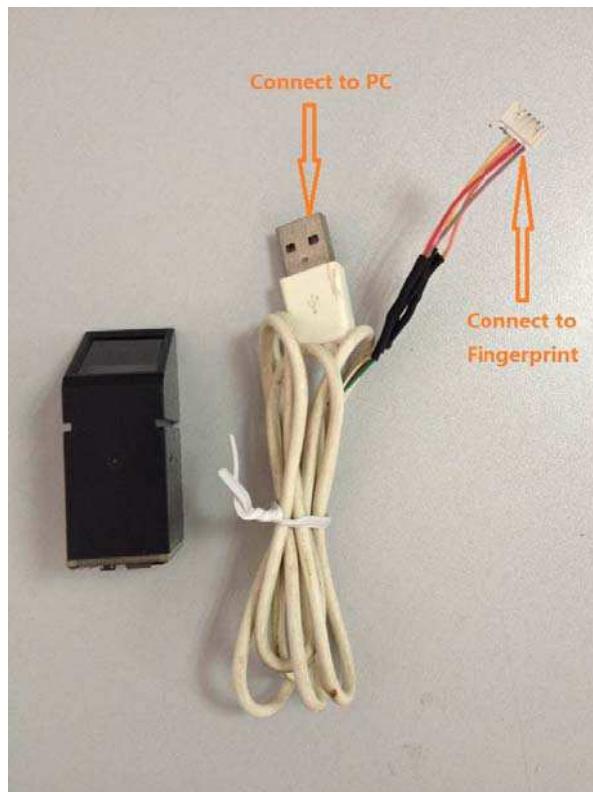


## DT601FP Fingerprint upgrade

Take out Fingerprint Model:



## Connection :



## PORT Description

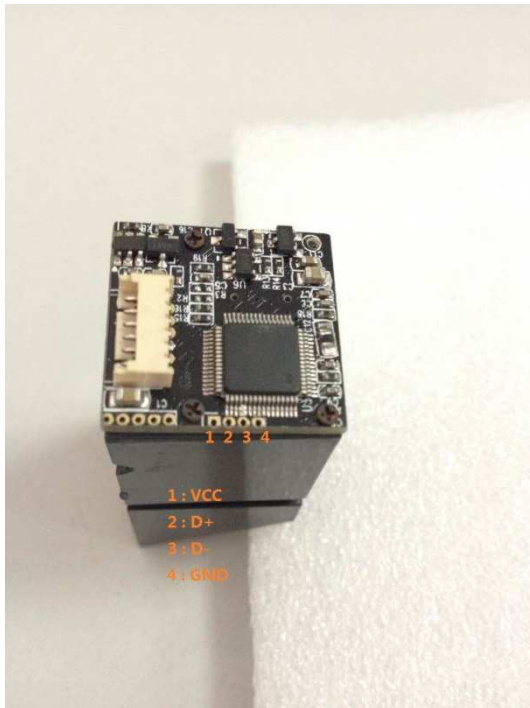
### 1. USB Port Description:




USB PIN Definition

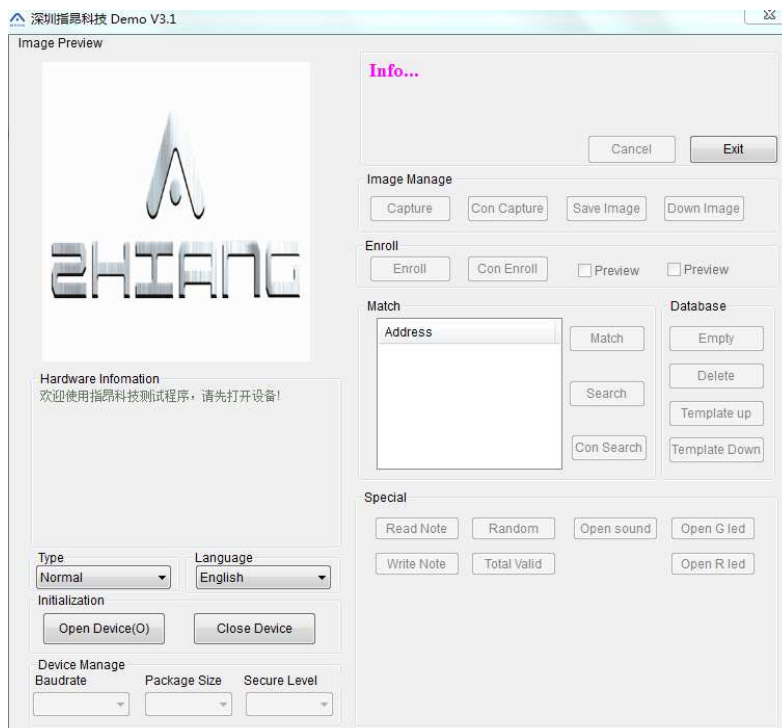
Pin	Name	Cable color	Description
1	VCC	Red	+5V
2	D-	White	Data -
3	D+	Green	Data +
4	GND	Black	Ground


## 2. Fingerprint Model Port description:

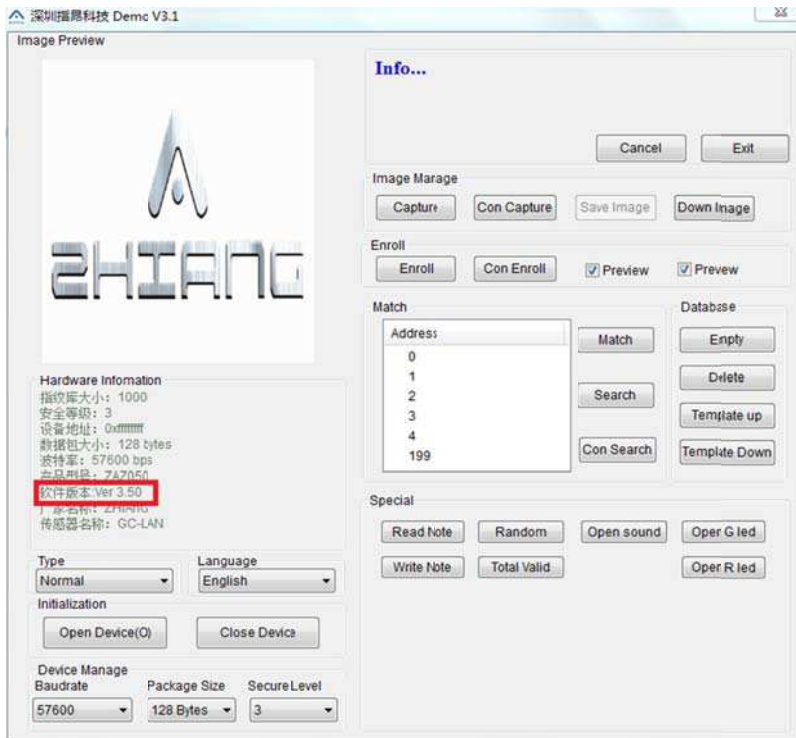


## Software Version Test:

1. Connect Fingerprint Model to PC
2. Open  ZAZDemo3.1.exe software as the follow picture shows:



3. Click  to open the software, see the follow picture:

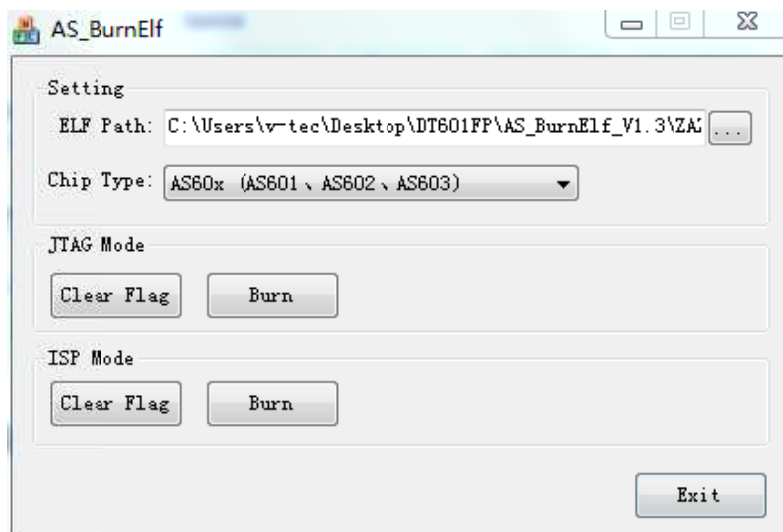


Noted that the Red mark, it is the new version. If it is not the version,

Please update

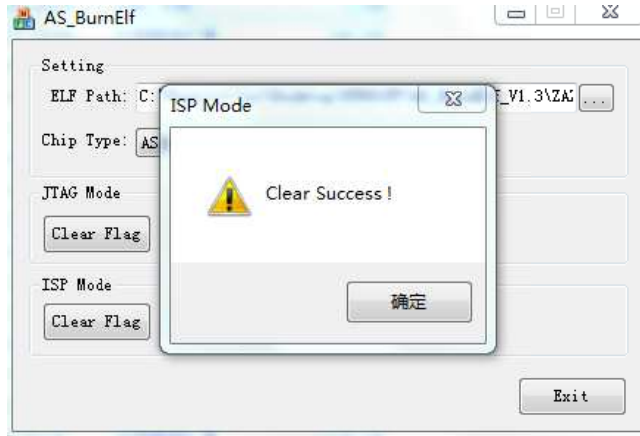
### Upgrade software:

1. Open  AS\_BurnElf.exe icon in the **AS\_BurnElf\_V1.3** file.

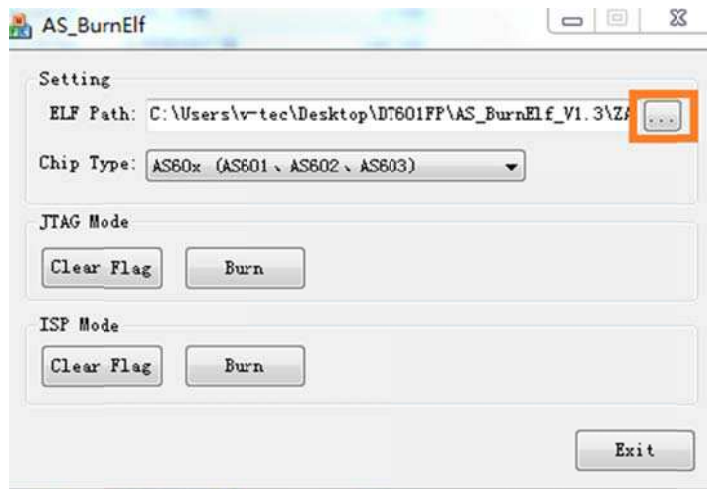




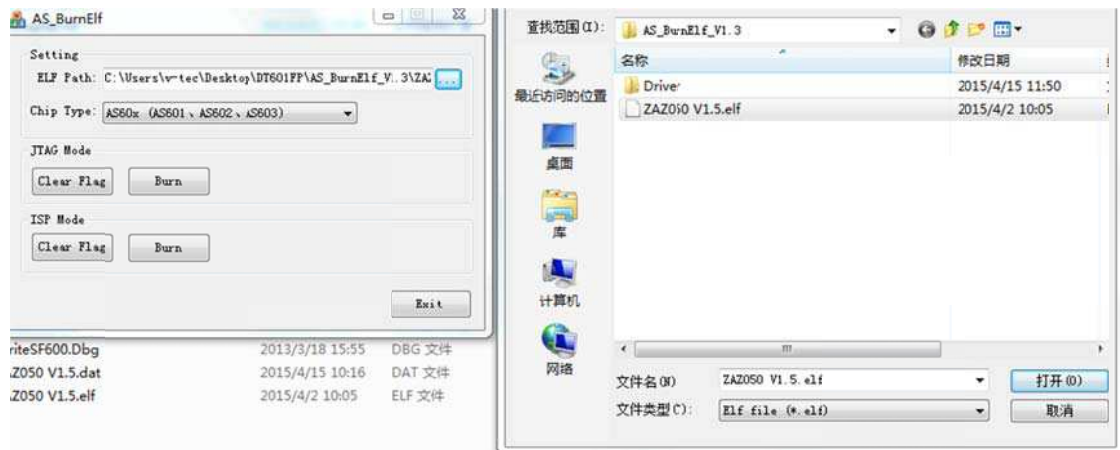
2. Click **Clear Flag** icon, it would appear the windows as follow:



3. Power-off and Power-on again.

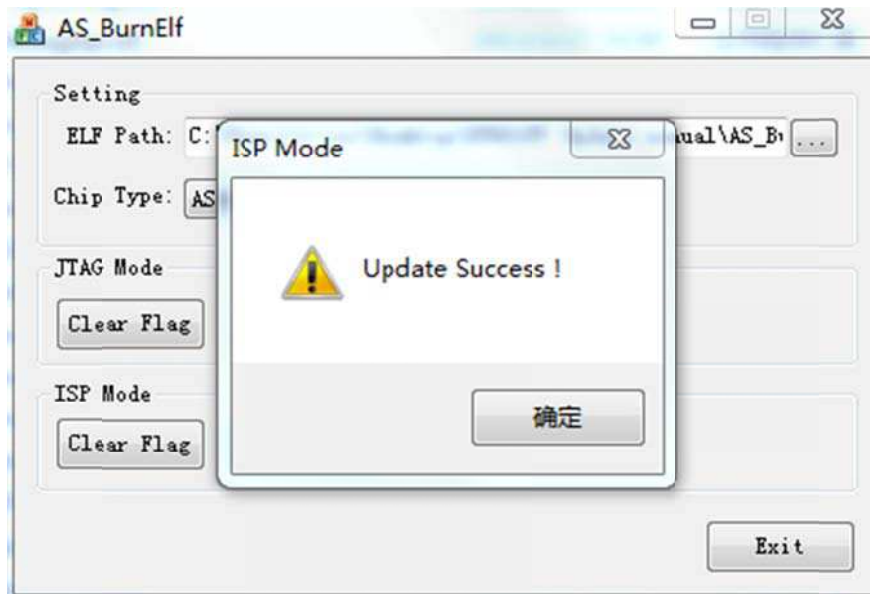


4. Click the Red mark to open the file



Choose the **ZAZ050 V1.5.elf** and open

5. Click  **Burn** icon to update software.



6. Update finished