

Product Information

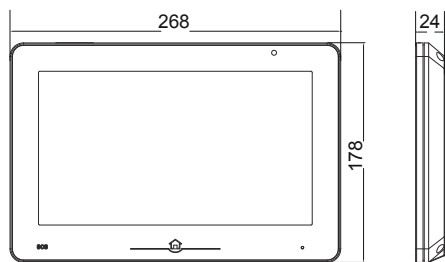
DT31M 2-Wire Indoor Monitor



DESCRIPTION

2-wire system 10 inch digital color TFT monitor with sensitive touch sensor button.

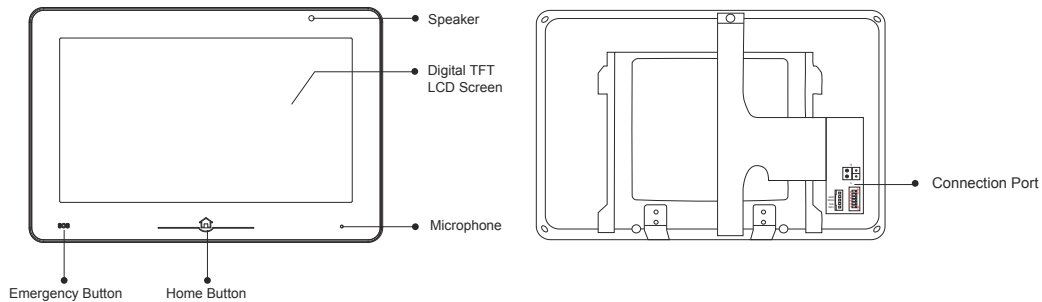
DIMENSION



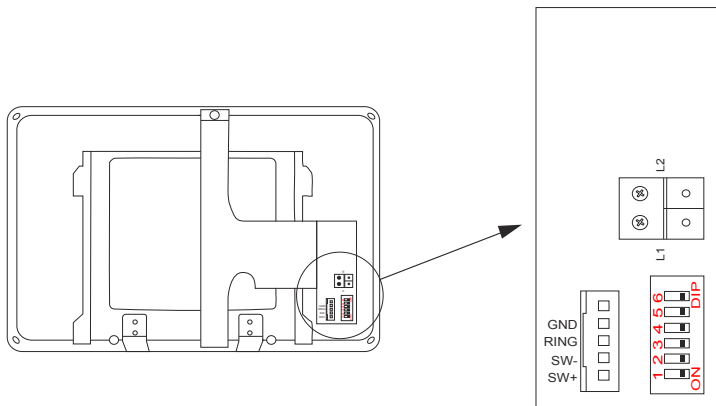
FEATURES

- ▶ Ultra mirror flat panel;
 - ▶ 10 inch digital TFT ;
 - ▶ Capacitive touch screen with high resolution;
 - ▶ Embedded Home-WIFI module for mobile app control;
 - ▶ GSM module is optional via DIY installation;
 - ▶ Picture memory or SD video recording;
 - ▶ Image quad-split is supported.
-

1. Parts and Functions

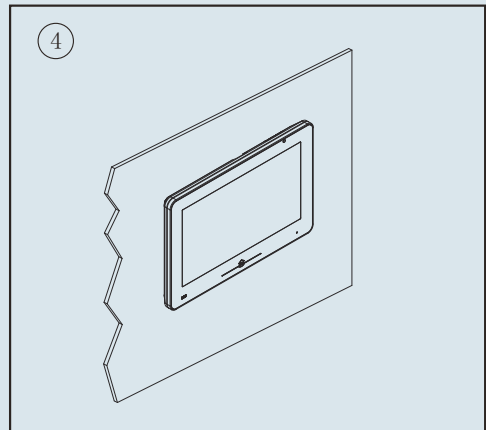
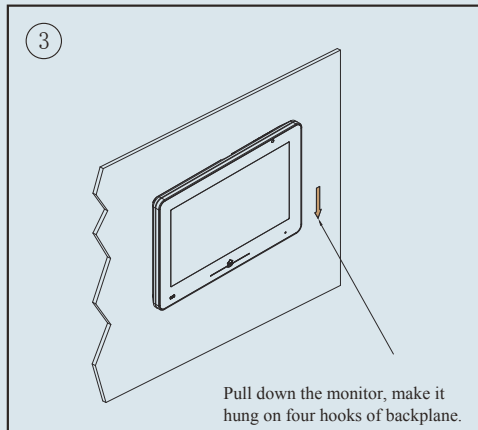
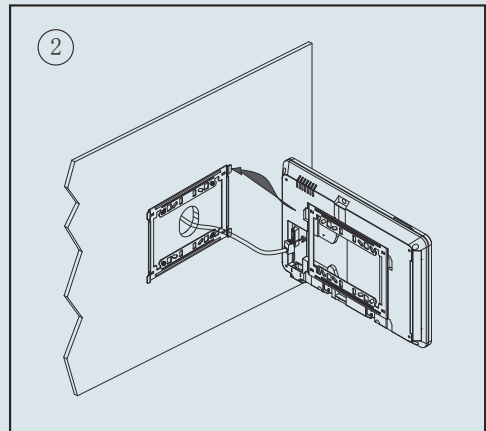
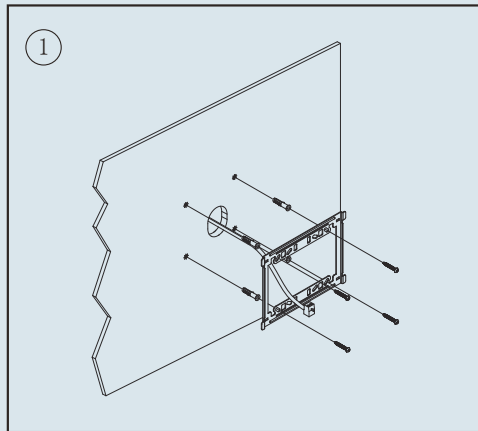


Terminal description



- * L1,L2: Bus terminal.
- * SW+,SW-: Door bell call button connection port.
- * Ring,GND: Extra buzzer connection port.
- * DIP switches: Total 6 bits can be configured.
- * Bit1~Bit5: Used to User Code setting.
- * Bit6: Set to ON if the monitor is at the end of the line or works with DBC4A. Otherwise, set to OFF.

2. Door Station Mounting



3. Specification

- Power supply for indoor monitor: DC 20~28V
- Power consumption: Standby 20.9mA; Working 350mA
- Monitor screen: 10 Inch digital color TFT
- Display Resolutions: 800*3(R, G, B) x 480 pixels
- Video signal: 1Vp-p, 75Ω, CCIR standard
- Wiring: 2 wires, non-polarity
- Dimension: 178(H)×268(W)×24(D)mm

4. Ordering Information for Door Station

Model No.	Brief Description	Remark
DT31M/TD10	10 inch digital color TFT monitor with touch screen and picture/video memory & white housing.	Color icon

5. Packing Information



Dimensions: 202(H)X290(W) X42(D) mm
Gross Weight: 0.86Kg



Carton: 530 (H)×340 (W)×258 (D)mm
Quantity: 18PCS

6. User Interface: Menu style

